
Progeny of residual feed intake tested sires required

Project Description

Progeny of sires tested for residual feed intake are needed for a project which will highlight the genetic improvement that can be realized through RFI testing and selection. The cattle utilized in this project will also be used to validate a new feedlot technology which measures real-time body weight and watering behavior. Carcass data and residual feed intake values will be collected for all of the animals used in this project and will be available to the previous owner of the cattle.

Technology

GrowSafe Systems Ltd. is an advanced technology company which develops radio frequency identification automation solutions for the beef industry. GrowSafe patented technology offers a scientifically proven, unprecedented ability in real-time to continuously and automatically identify sick, poor performing and market ready animals. Two of our advanced technologies will be utilized in this project.

GrowSafe Research™

GrowSafe Research™ technology measures individual animal feed intake in a grouped pen of cattle. This technology is used extensively by research institutions and commercial bull test facilities throughout Canada and the United States to measure individual animal feed intake.

This technology will be utilized to determine residual feed intake values of the cattle used in this experiment.



FIGURE 1. Snyder Livestock Sire Testing Facility, Yerington, Nevada

GrowSafe Feedlot™



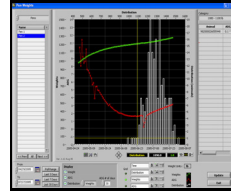
Animal is tagged with an electronic ear tag. Every animal has a unique number.



Each time an animal drinks, GrowSafe technology measures growth and behavior.



Measurement data is sent wireless up to 30 miles to the data acquisition computer.



Software determines real-time animal performance, health and market value.



Automated marking mechanism paints animals requiring treatment or ready for market.

GrowSafe Feedlot™ technology measures real-time individual body weight and drinking behavior in a grouped pen of animals. The system utilizes a series of scales which are placed in front of a water trough. Each animal's weight and drinking behavior are recorded at each visit. Software then determines an animal's growth performance, health status, and days to optimal marketing point.

Cattle Desired

Cattle must have known sires that have undergone a residual feed intake test and have production records including birth and weaning dates, birth and weaning weights, and dam's breed composition. Sires with negative and positive residual feed intake values are desired. Steers are preferred and cattle should weigh between 500-700 lbs when delivered.

A premium above market price will be paid for these cattle along with carcass and residual feed intake data being provided back to the previous owner of the cattle.

If you are interested in participating in this project please contact:

Dr. Bill Kolath, Scientific Officer
GrowSafe Systems, Ltd.
280105 Range Road 22
RR#1 Site #1 Box 19
Airdrie, AB, T4B 2A3
Voice: 403-912-1879 ext. 227
Fax: 403-398-1327
Email: bill.kolath@growsafe.com
www.growsafe.com